

Customizing the Beta-Calco Rail-Lite™ Family

1.0 The Beta-Calco Rail-Lite™ family is preloaded with the following types:

- 1.1 **52 9001•52 0121•B27A•6W•WH** - *with Bezel Trim*
- 1.2 **52 9002•52 0485•B27A•9W•SL** - *with Bezel Trim*
- 1.3 **52 9003•52 2243•B27A•5W•BL** - *Trimless*
- 1.4 **52 9004•52 4410•B27A•6W•BL** - *Trimless*

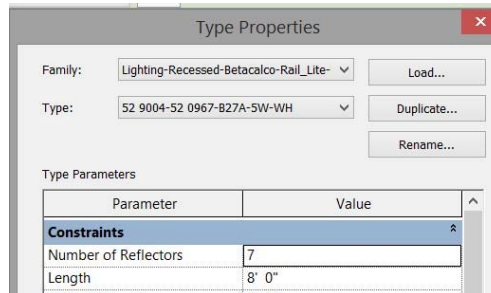
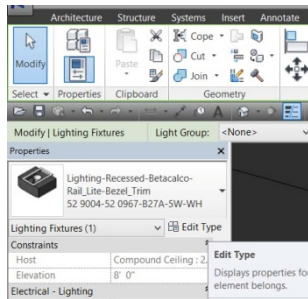
2.0 The type names are based on the Rail-Lite™ Specification Code:

- 2.1 **52 9001** : *Reflector Code*
- 2.2 **52 0121** : *Luminaire Type (Fixture Length)*
- 2.3 **B27A** : *LED Type*
- 2.4 **5W** : *Profile Aperture*
- 2.5 **WH** : *Bezel Trim Finish*

3.0 Customizing the family under the Type Properties menu

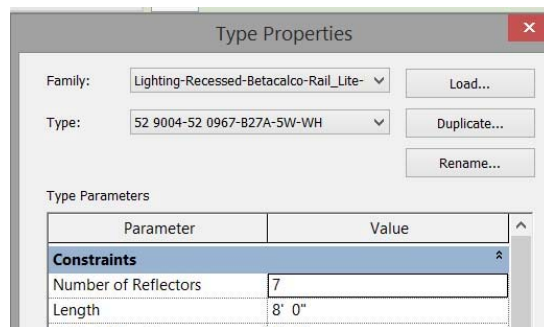
3.1 Select the family in the project file.

3.2 On the **Properties Panel**, select **Edit Type**. The **Type Properties** menu appears.



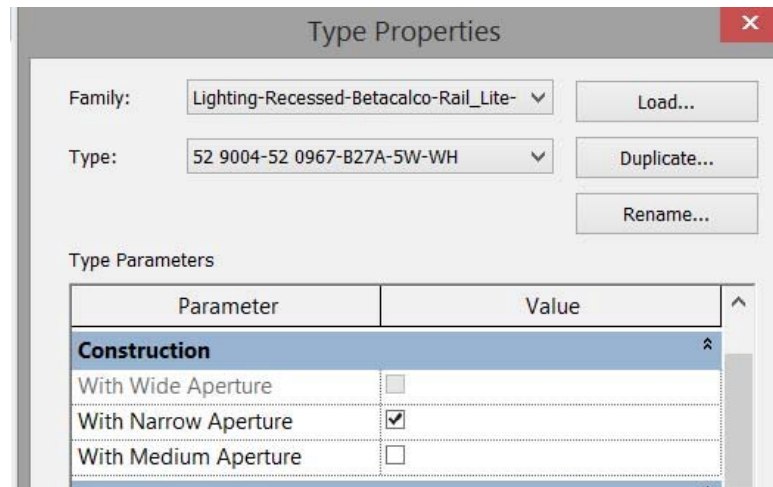
Specifying the number of reflectors and fixture length

3.3 Under group parameter **Constraints**, enter a Value on the **Number of Reflectors** parameter (1 to 10) and **Length** [12"(1'-0") to 144"(12'-0")] parameter. Consult Specifications for corresponding number of reflectors to fixture length.



Specifying the Profile Aperture

- 3.4 Under group parameter **Construction**, check the aperture of your choice and uncheck all others. The **With Wide Aperture** (9") parameter will automatically be unchecked if you check either the **With Narrow Aperture** (5") or **With Medium Aperture** (6") parameter. To specify **With Wide Aperture**, uncheck both the **With Narrow Aperture** and **With Medium Aperture** parameters.



Type Properties

Family: Lighting-Recessed-Betacalco-Rail_Lite- Load...

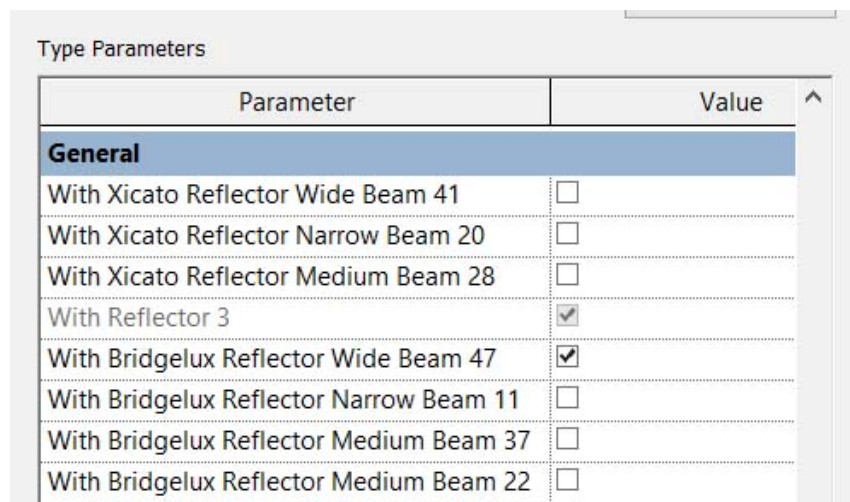
Type: 52 9004-52 0967-B27A-5W-WH Duplicate... Rename...

Type Parameters

Parameter	Value
Construction	
With Wide Aperture	<input type="checkbox"/>
With Narrow Aperture	<input checked="" type="checkbox"/>
With Medium Aperture	<input type="checkbox"/>

Specifying Reflectors

- 3.5 Under group parameter **General**, check the reflector of your choice and uncheck all others. The reflector of your choice will drive the parameter **With Reflector 3** to be checked or unchecked. If the **With Reflector 3** is checked, it means it has a 3" diameter reflector. If it is unchecked, it means it has a 5" diameter reflector. Consult Specifications for specifying the correct reflector.



Type Parameters

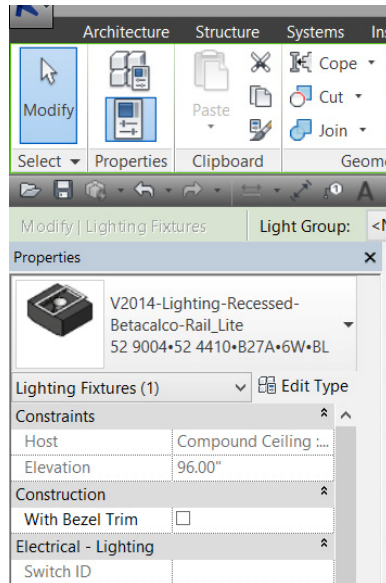
Parameter	Value
General	
With Xicato Reflector Wide Beam 41	<input type="checkbox"/>
With Xicato Reflector Narrow Beam 20	<input type="checkbox"/>
With Xicato Reflector Medium Beam 28	<input type="checkbox"/>
With Reflector 3	<input checked="" type="checkbox"/>
With Bridgelux Reflector Wide Beam 47	<input checked="" type="checkbox"/>
With Bridgelux Reflector Narrow Beam 11	<input type="checkbox"/>
With Bridgelux Reflector Medium Beam 37	<input type="checkbox"/>
With Bridgelux Reflector Medium Beam 22	<input type="checkbox"/>

4.0 Customizing the family under the Properties Panel (Instance Parameters)

4.1 Select the family in the project file.

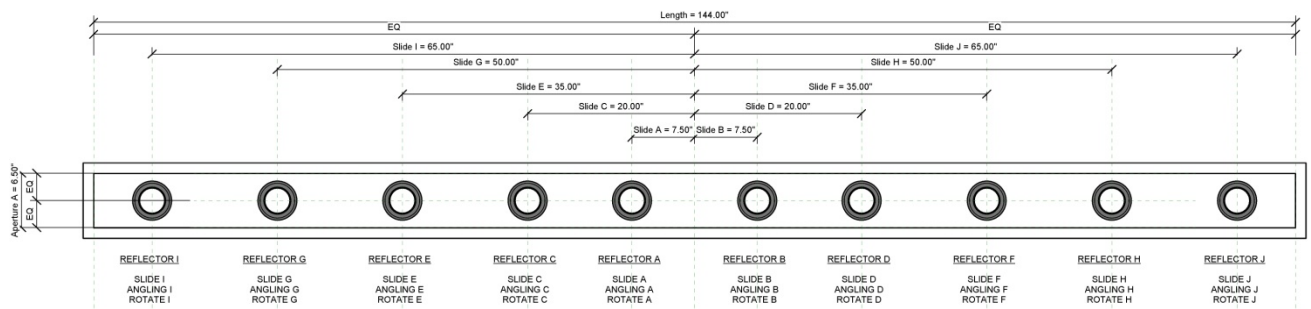
Bezel Trim Visibility

4.2 On the Properties panel under group parameter **Construction**, check the box beside the parameter **With Bezel Trim** to make it visible. An unchecked box will make the fixture a Trimless version.

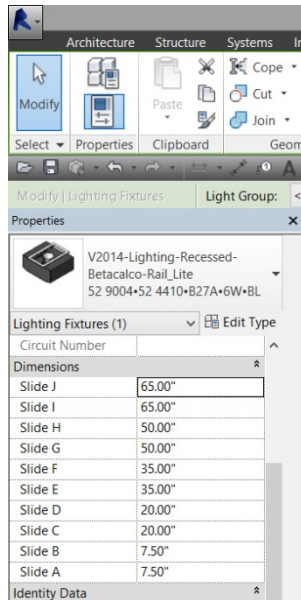


Sliding the Reflectors

4.3 See figure below for parameters associated with the reflector names.

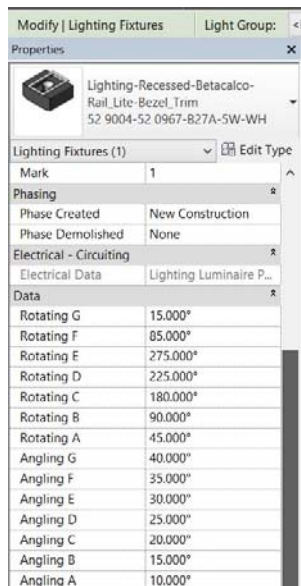


- 4.4 On the Properties panel under group parameter **Dimensions**, specify a positive value on the **Slide** parameter/s depending on the number of reflectors you have. Otherwise, specify a value of 0.00 on the **Slide** parameter/s that will not appear on the fixture. The **Slide A** parameter value is set to 0.00. This means that it is at the center of the fixture. Adding a positive value will set it off-center.



Angling & Rotating the Reflectors

- 4.5 On the Properties panel, under group parameter **Data**, specify values to the **Angling** (0° - 45°) and **Rotating** (0° - 360°) parameters.



- 5.0 To exit, press the **Esc** button on your keyboard.

6.0 Changing the photometric web file (ies) in each reflector

6.1 The fixture has nested families (3 levels). Below is the order in which the families are nested to the parent family:

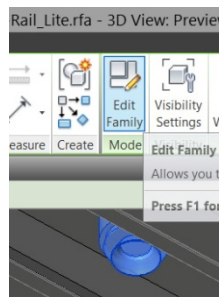
6.1.1 **Lighting-Recessed-Betacalco-Rail_Lite.rfa** - *parent family*

6.1.2 **Rotate.rfa** - *rotation family-nested in the parent family*

6.1.3 **Angling.rfa** - *angling family - nested in the rotation family*

6.1.4 **Reflector.rfa** - *nested in the angling family - contains the photometric web file*

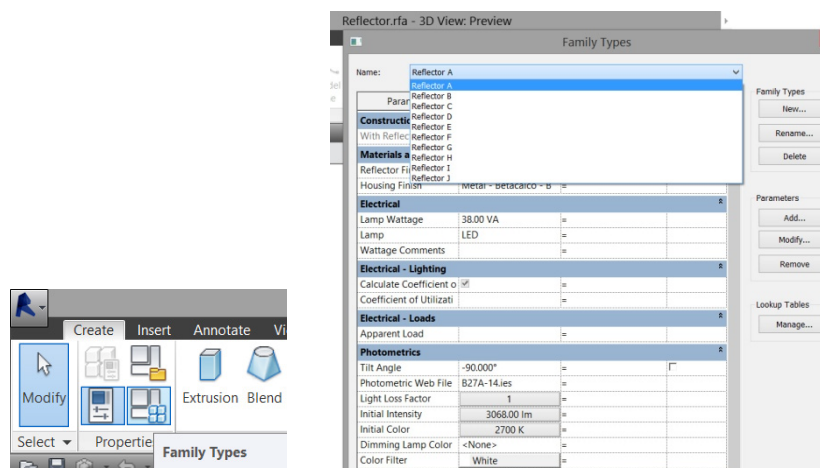
6.2 To change the ies files, open the parent family. Select a reflector/head and click Edit Family.



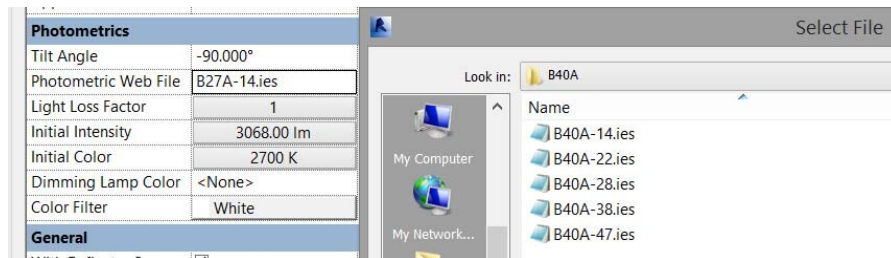
6.3 The rotation family (Rotate.rfa) appears. Select the reflector/head in the drawing area and click **Edit Family**.

6.4 The angling family (Angling.rfa) appears. Select the reflector/head in the drawing area and click **Edit Family**.

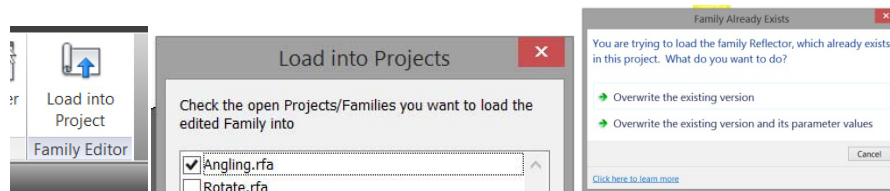
6.5 The family Reflector.rfa appears. Select the **Family Types** button. The **Family Types** Menu appears.



- 6.6 There are several types in the reflector family - Reflector A-J. Select the type you want to update from the Name drop down menu. Under group parameter Photometrics, click in value column beside the photometric web file parameter. The Select File Menu appears. Locate the desired ies file, select it, and click Open. Click OK. Repeat the process until you have updated the desired ies files.



- 6.7 Load the reflector family into the angling family (**Angling.rfa**) by clicking the Load into Project tool. Check the box beside the Angling.rfa and click OK. Select "Overwrite the existing version and its parameter values".



- 6.7 Load the Angling family into the rotate family (**Rotate.rfa**) by clicking the Load into Project tool. Check the box beside the Rotate.rfa and click OK. Select "Overwrite the existing version and its parameter values".

- 6.8 Load the rotate family into the parent family (**Lighting-Recessed-Betacalco-Rail_Lite.rfa**) by clicking the Load into Project tool. Check the box beside the **Lighting-Recessed-Betacalco-Rail_Lite.rfa** and click OK. Select "Overwrite the existing version and its parameter values".

- 6.9 Add a new Family Type to fixture and save the parent family.

- 7.0 Load the parent family in a project file.